

Eddy Solutions was launched in 2015 to solve the challenges of managing domestic water systems in commercial asset classes.

Eddy offers a full-service water management technology that includes water leak detection, asset protection, and water conservation. Our technology continuously monitors the flow, temperature, and pressure conditions within the domestic water system, and can also detect emergency situations, protect by shutting off the water remotely, and provide insights on the water systems to owners, operators, engineers, and manufacturers.

On May 4, 2022, Eddy Solutions acquired a 100% ownership interest in Reed Controls Inc. ("Reed"). Reed developed a robust water management technology platform of hardware and software to manage water related risk and conserve water.

eddy

TSX.V: EDY

Eddy Smart Home Solutions

Boris Baril, CFO

INVESTMENT HIGHLIGHTS

\$30M

Invested in Technology; Compelling Feature Set and Sensor Suite, Proprietary Technology Stack

\$32.6M

MM Backlog (Signed Deals Not Fully Deployed)

>24K

Total Subscribers & ~ 30 MM Square Footage Protected

\$133M

In Total Sales Pipeline Representing 739 Opportunities

\$75 M

Sales Pipeline (Proposal/Quote and Contract stages)

OPPORTUNITY FOR GROWTH

Eddy's service offerings are comprised from hardware and software, generating both one-time and recurring revenues.

Unit Economics

Asset type: Multi Family Residential

Location: Toronto, ON

Units: 575

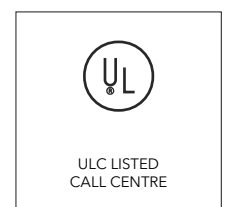
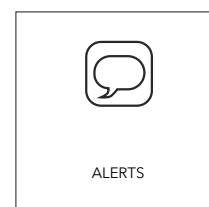
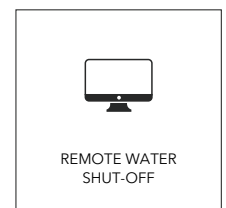
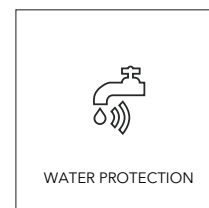
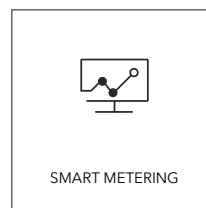
Revenue: \$19.64 @ 84 months = \$1,650

COS: \$5.90 @ 84 months = \$496

Margin: \$13.75 @ 84 months = \$1,155

Eddy Advantages

Full service offering powered with connected technology and suitable to any commercial asset type.



WATER IS THE NEW FIRE

70% of all commercial claims are water related, and with over \$1 billion in paid water damage commercial claims in Canada, water has become the new fire.

\$1.2 BN

Of non-weather related water damage occurs annually

1.1 TN

Gallons of water wasted yearly in the US due to water leaks (equivalent to 11M homes/usage annually)

\$307k

Average insurance claim value due to water losses in construction since 2010

70%

Of all commercial claims by dollar value are water damage related

2-3 BN

kW/h of electricity is expended pumping water due to leakage in the US

COMMITMENT TO SUSTAINABILITY

01

Running a safe, efficient, responsible, and profitable business

Sharing wider benefits where we operate

02

03

Helping to shape a more sustainable water future

MANAGEMENT



Mark Silver
Executive Chair



Sajid Khan
COO and President



Boris Baril
CFO



June Thomson
EVP, Sales, Marketing and Business Development



Avi Yurman
Co-founder of Reed, EVP of Innovation of Eddy



Adam Bartman
Co-founder of Reed, EVP Field Operations at Eddy



Avishai Moscovich
CMO of Reed, VP of Business Development/Marketing